

# HUGIN INF 60x60 840 HO

E-number: 7020115

## Description

Barcode:	7330139120397
Series:	Hugin

## Photometric data

Rated luminous flux (lm):	2180
Min luminous flux (lm):	2180
Max luminous flux (lm):	2180
Luminaire efficacy (lm/W):	109
Max. system power (W):	20
Light source:	LED exchangeable
Light source included:	Yes
Min colour temperature (K):	4000
Max colour temperature (K):	4000
Colour rendering index CRI:	80-89
Colour consistency:	SDCM3
Light sharing:	Symmetric
Light distributor:	Diffuser lens/optic/panel
Light outlet:	Direct
Suitable for monitor:	Yes
Lumen median 50000h (tq):	90
Lumen median 75000h (tq):	85
Lumen median 100000h (tq):	80
Failure rate median 75000h:	85
Energy efficiency class:	D
Nominal lifetime L70/B50 at 25 °C (h):	100000.00

## Technical data

Spänning, nominell (V):	230
Min nominal voltage (V):	220
Max nominal voltage (V):	240
Voltage type:	AC
Frequency (Hz):	50
Type of control gear:	LED operating device current-controlled
With control gear:	Yes
Control gear, type:	Constant Current 217mA
Max nominal voltage (V):	240

## Control

Operation by Bluetooth:	No
With movement sensor:	False

## Materials and environmental data

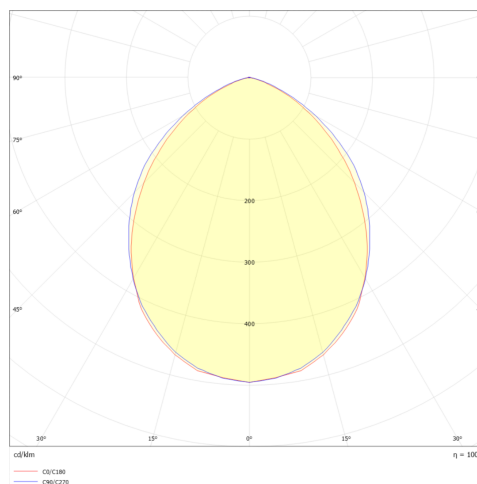
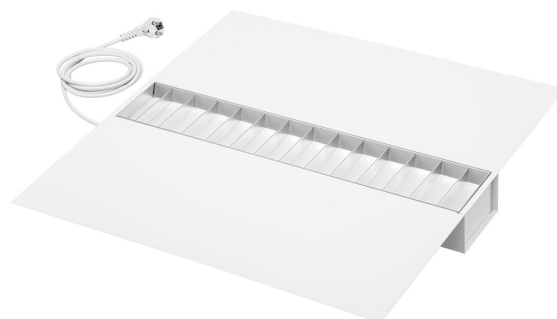
Housing material:	Steel
Housing colour:	White
Material cover:	Plastic, opal
Country of origin:	SE
Surface protection housing:	Pulverlackerad

## Connection and installation

Degree of protection (IP), front side:	IP20
Degree of protection (IP), rear side:	IP20
Protection class:	I
Suitable built-in mounting:	Yes
Built-in width (mm):	595
Built-in length (mm):	595
Min ambient temperature:	-20
Max ambient temperature:	35
Type of wiring:	Ending
Fuse B10 (st):	18
Fuse B16 (st):	30
Fuse C10 (st):	30
Fuse C16 (st):	51

## Dimensions and weight

Length (mm):	595
Width (mm):	595
Height/depth (mm):	73
Weight armature (kg):	3.62
Length/depth package (mm):	650
Width package (mm):	650
Height package (mm):	115
Weight package (kg):	4



Do you need support?

offert@exaktor.se

0370-69 07 20

exaktor.com/en

exaktor